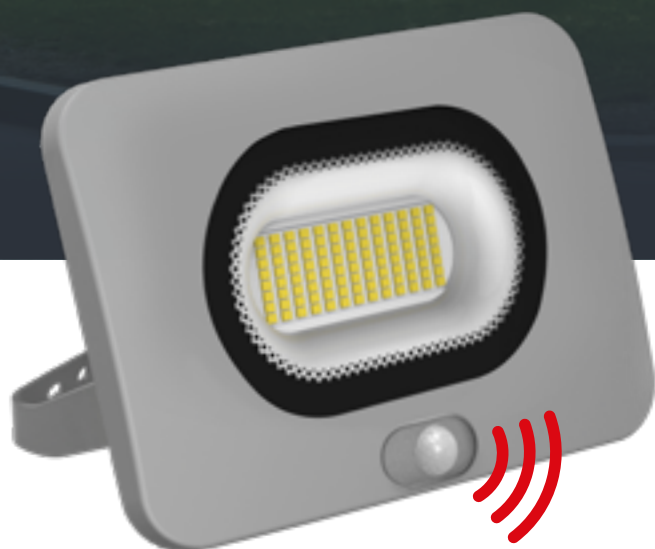




STANDARD



SENSOR



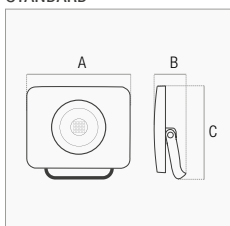
PIR
Sensor



Crepuscolare
Light sensor

SHUTTLE SLIM

STANDARD



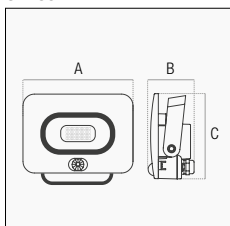
	A mm	B mm	C mm	g
10 W	95	32	76	190
20 W	120	32	95	238
30 W	150	38	120	330
50 W	188	38	145	580

OUTPUT

10 W	720 lm	110° ∠	Standard	4000K	SHSLIM-109540	1/24	€ 15,00
20 W	1.500 lm	110° ∠	Standard	4000K	SHSLIM-209540	1/24	€ 19,00
30 W	2.340 lm	110° ∠	Standard	4000K	SHSLIM-309540	1/12	€ 26,00
50 W	4.000 lm	110° ∠	Standard	4000K	SHSLIM-509540	1/6	€ 40,00



SENSOR



	A mm	B mm	C mm	g
10 W	142	48	102	350
20 W	142	48	102	350
30 W	175	52	124	460
50 W	205	52	146	650

OUTPUT

10 W	720 lm	110° ∠	PIR Sensor	4000K	SHSLIS-109540	1/24	€ 32,00
20 W	1.500 lm	110° ∠	PIR Sensor	4000K	SHSLIS-209540	1/24	€ 36,00
30 W	2.340 lm	110° ∠	PIR Sensor	4000K	SHSLIS-309540	1/12	€ 44,00
50 W	4.000 lm	110° ∠	PIR Sensor	4000K	SHSLIS-509540	1/6	€ 56,00



SENSOR



On-Off automatico giorno-notte
Automatic day-night on-off



3 - 2.000 Lux

Regolazione della sensibilità alla luce del sensore
Sensor light sensitivity adjustment

30 sec - 10 min

Regolazione del periodo di accensione
Adjustment of the on-off time

Design ultrapiatto, scocca in alluminio pesante, vetro temperato.

Ultra-flat design, heavy aluminum shell, tempered glass.

